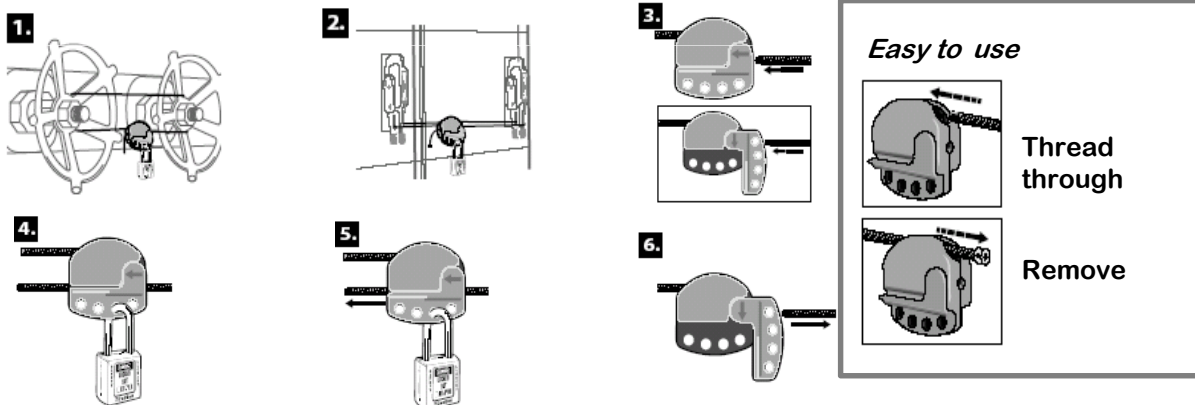
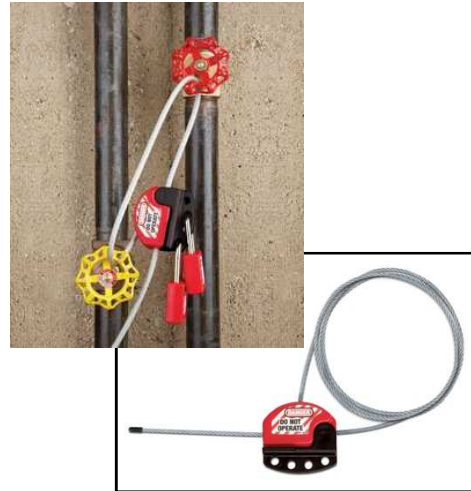


## Adjustable lockout cable - S806

**Adjustable lockout cable for simultaneously locking out multiple valves and circuit breakers**

- ✓ Lockout cable threads through valves to be locked out or circuit breaker levers, making them impossible to operate.
- ✓ Device can be locked using four padlocks, or more when used with a multi-point lockout hasp
- ✓ Lockout can be adjusted once the cable is locked
- ✓ Permanent "DANGER DO NOT OPERATE" labels available in French, English and Spanish can be used to identify worker, shift or department



### Technical specifications

- Flexible Ø 4 mm vinyl-coated insulated steel cable
- Standard length 1.80 m
- Lengths from 0.60 m to 15 m available on request
- Withstands temperatures from -57°C to 177°C
- Chemical resistant